

Other World Computing



SL3620-2S-LB2 RAID Ready NAS Bare enclosure or builds.

Upgrading Firmware

RAID Setup

Uploading Configuration

Restoring to Factory Settings

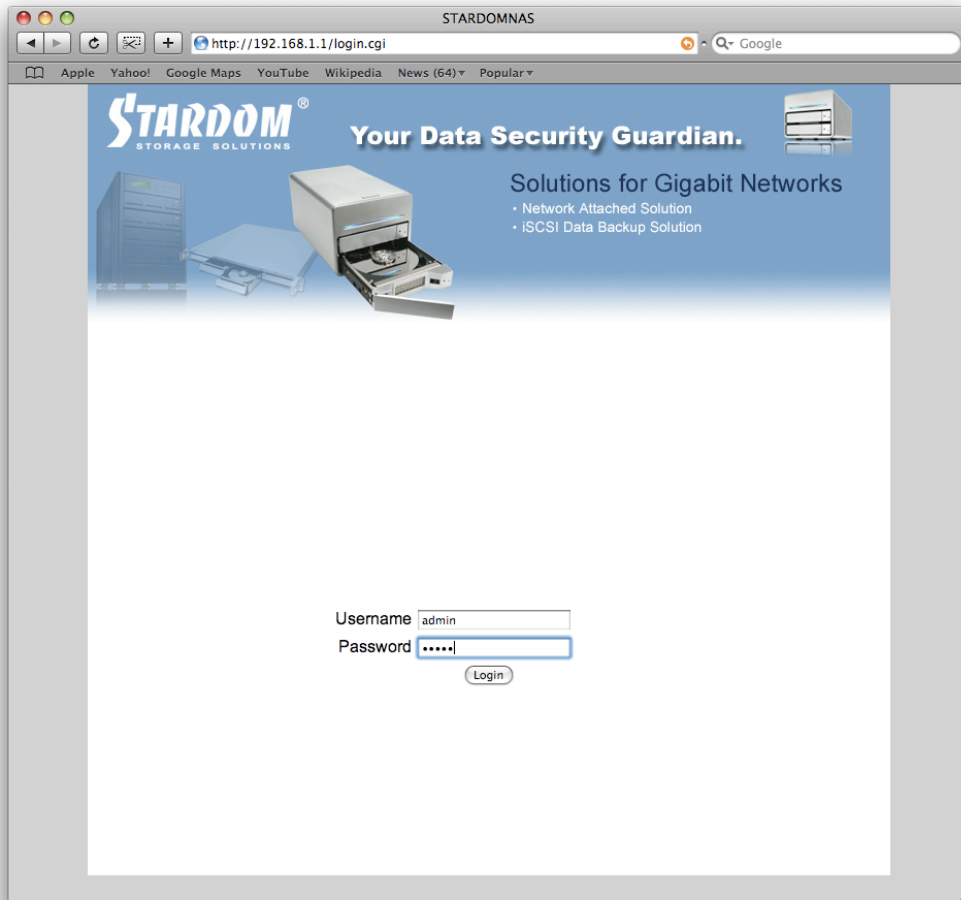
Mounting the Network Drive

by Brian Bellman 5/29/08

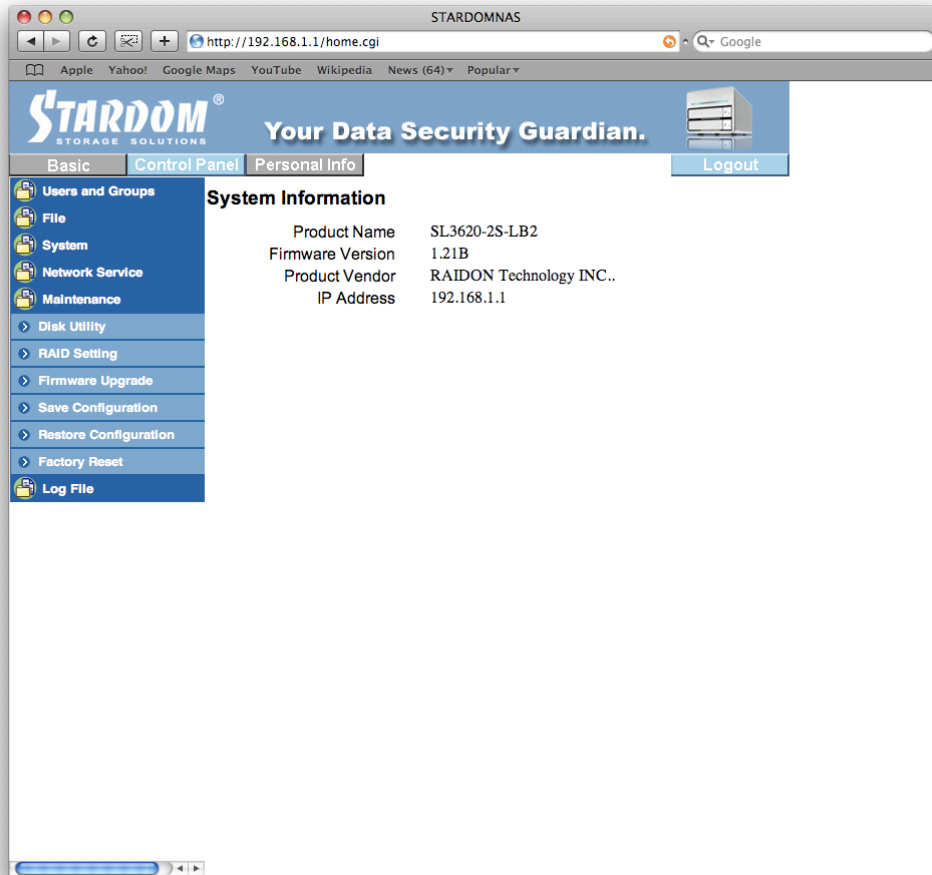
For detailed information regarding any of these configurations, PC Setup, Assembly and connections please see the Stardom Manual.

Prior to following the instructions make sure the hard drives are assembled into the trays and inserted in the 2 bay Stardom unit. Make sure the power is connected; the unit is turned on and connected to the computer via Ethernet.

You must wait until the long oval blue light is solid before beginning.

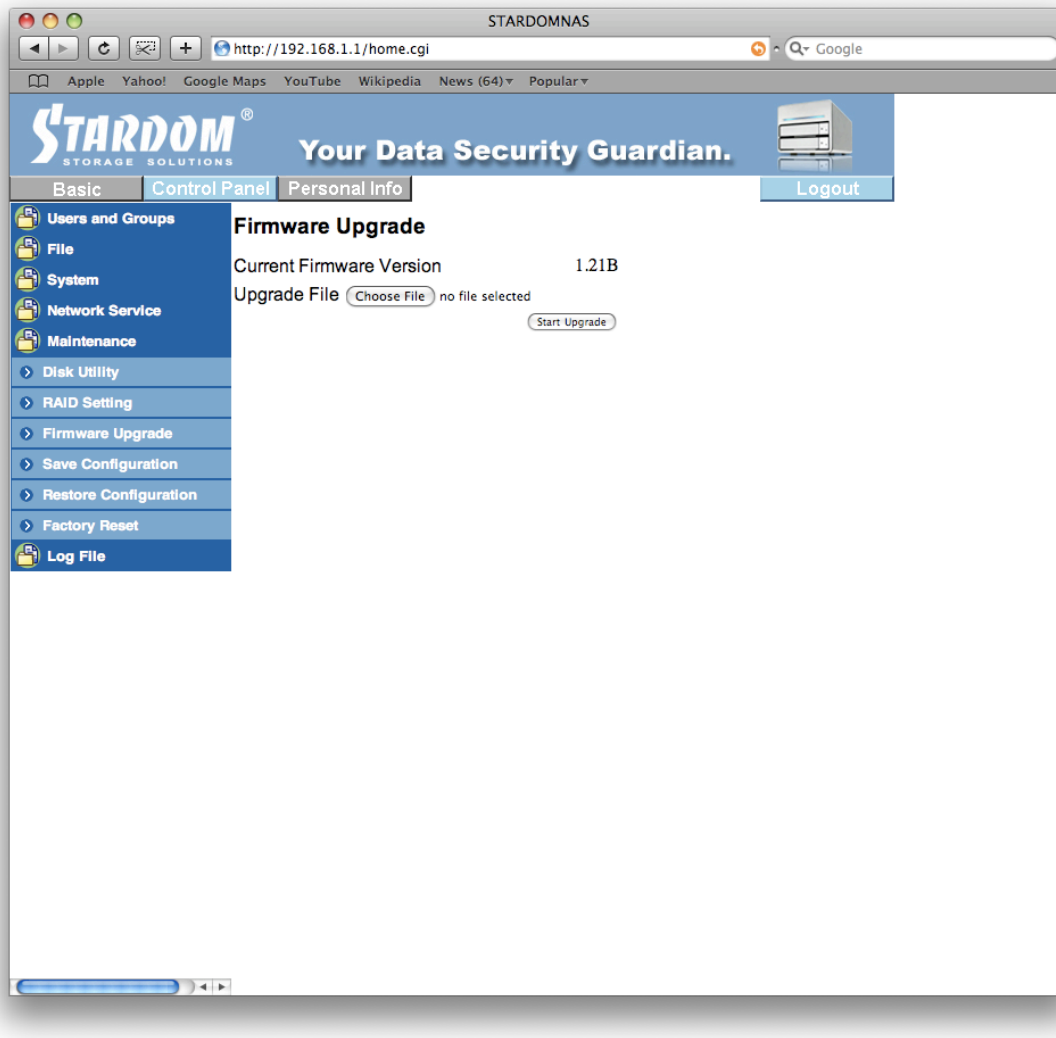


- 1) Open Safari and enter <http://192.168.1.1> and hit "Return"
- 2) You should see the login screen above. Enter the following:
 - a. Username: **admin**
 - b. Password: **admin**
 - c. Hit "**Login**"

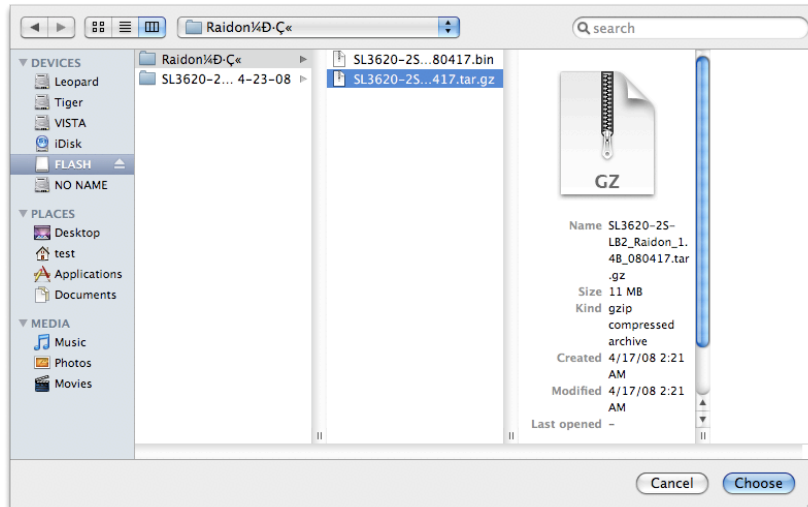


- 3) Look at the "**Firmware Version**", if it says **1.21B** you will need to upgrade the firmware. If it says **1.4B** for the "**Firmware Version**" please proceed to **step 12**.

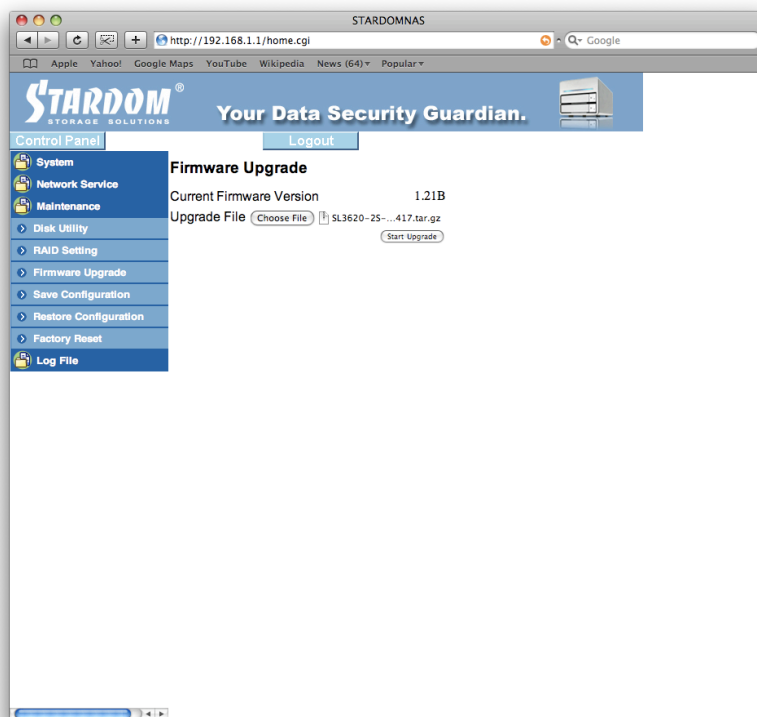
UPGRADING THE FIRMWARE TO 1.4B



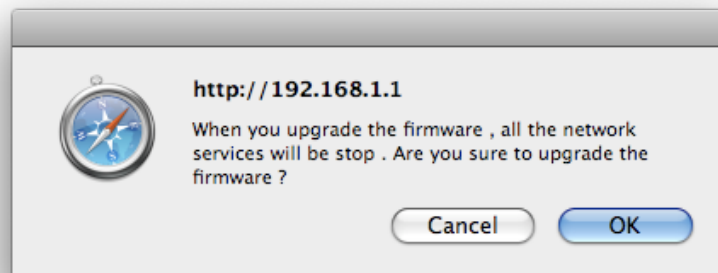
- 4) Click on **"Control Panel"** then **"Maintenance"** then **"Firmware Upgrade"**
- 5) Click on **"Choose File"**



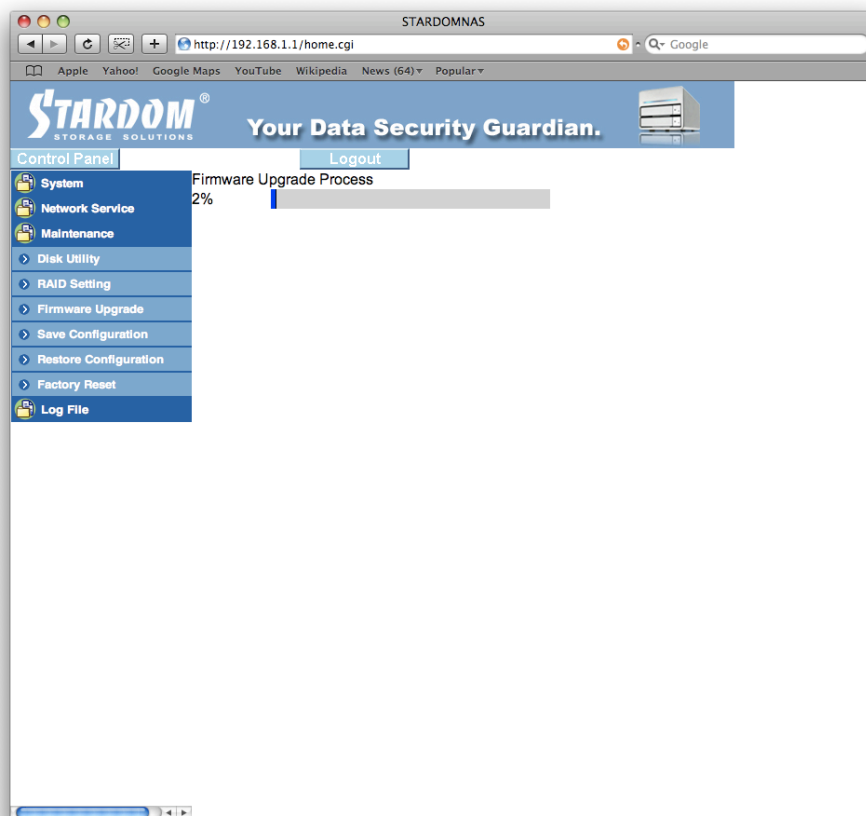
- 6) Select the firmware file **SL3620-2S-LB2_Raidon_1.4B_080417.tar.gz** and click **"Choose"**.



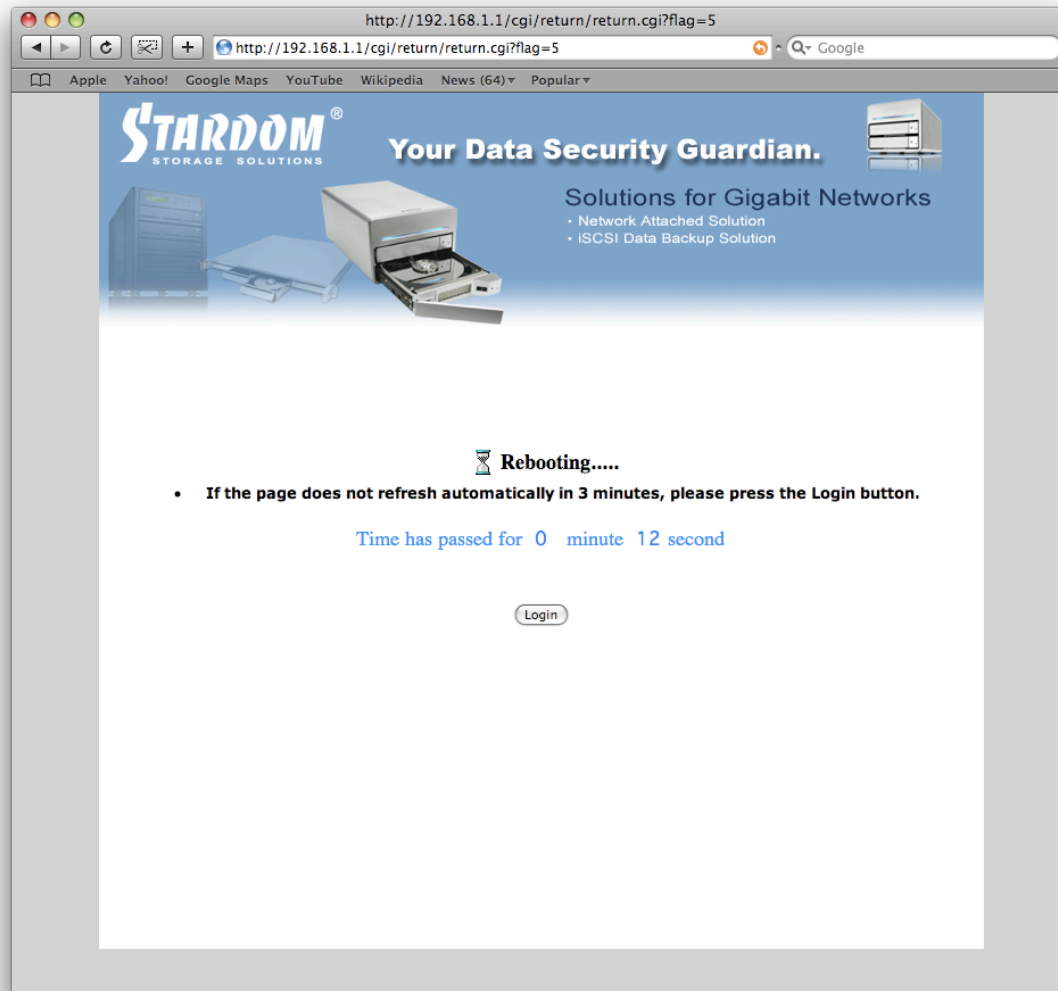
- 7) Click **"Start Upgrade"**.



8) Click **"OK"** on the pop-up

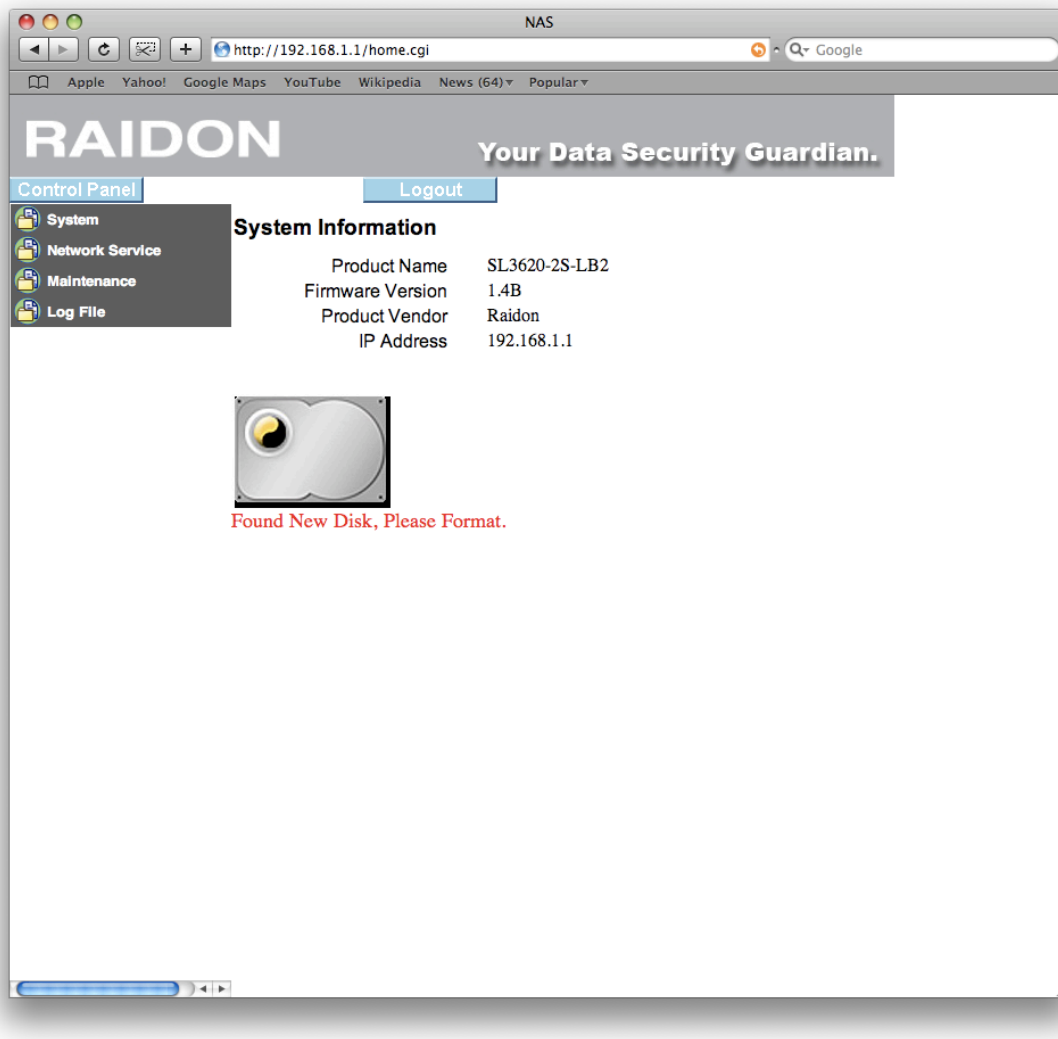


9) You will see the progress bar go through to 100%. The process can take 5 minutes or more to complete.

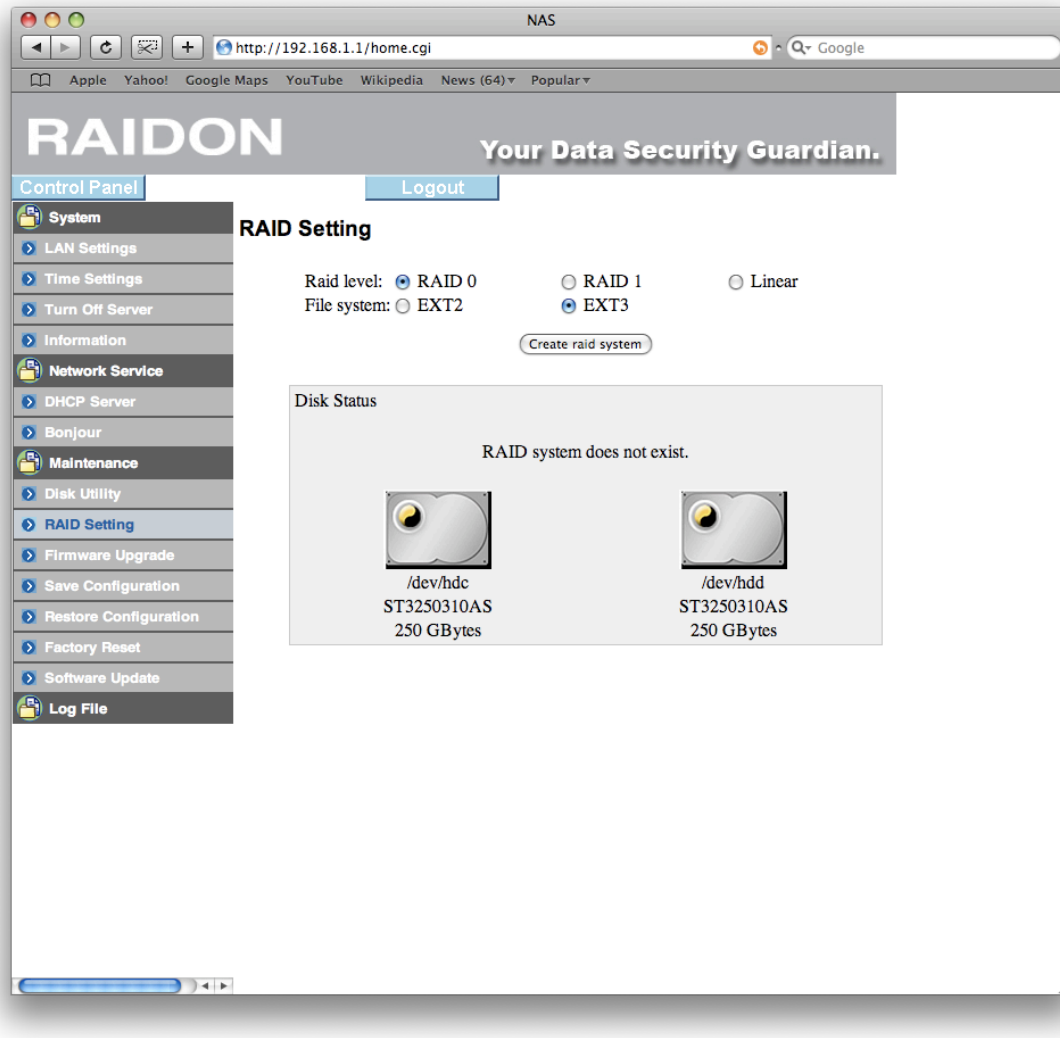


10) Once the Update is complete it will reboot and Automatically refresh to the login or main screen in 3 minutes. If the page does not refresh automatically after 3 minutes please press the **"Login"** button. The firmware process is now complete, the main screen should now say **"Firmware Version 1.4B"**. If it does not please retry the firmware upgrade process.

RAID Setup



11) Once you have logged in you will be at the screen above. Click on **"Control Panel"** at the top.



12) Click on **"Maintenance"** to expand it then click on **"Raid Settings"**.

Here you will be given the choice to select the RAID you want to setup this will depend on the build you are creating.

For a **Stripped RAID** select **"RAID 0"**

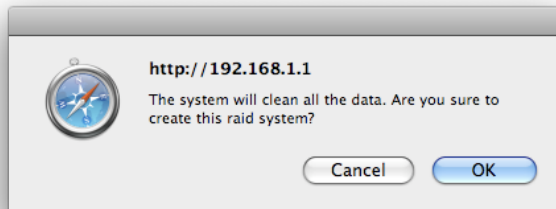
For a **Mirrored RAID** select **"RAID 1"**

For a **Spanned RAID** select **"Linear"**

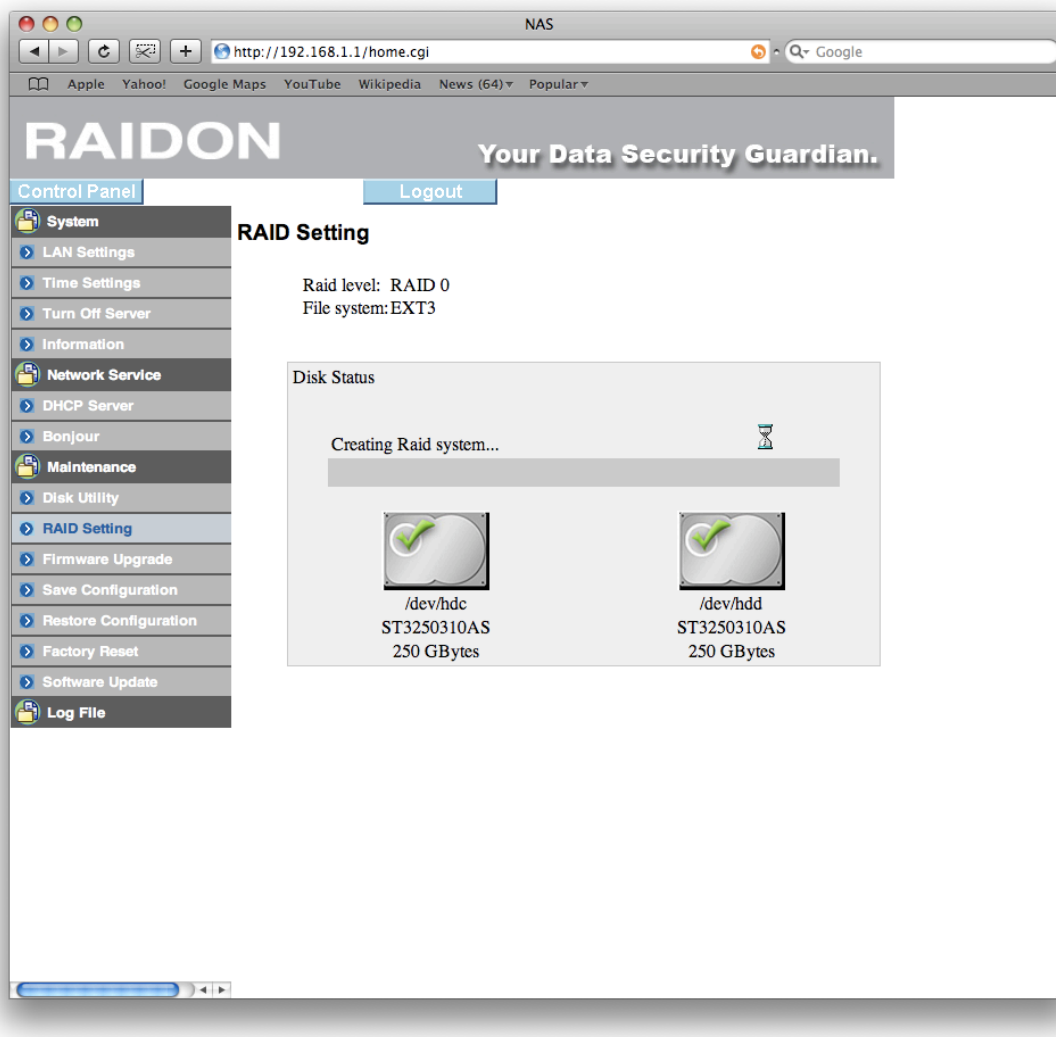
For the **"File system:"** always select **"EXT3"**

Next hit the **"Create raid system"**.

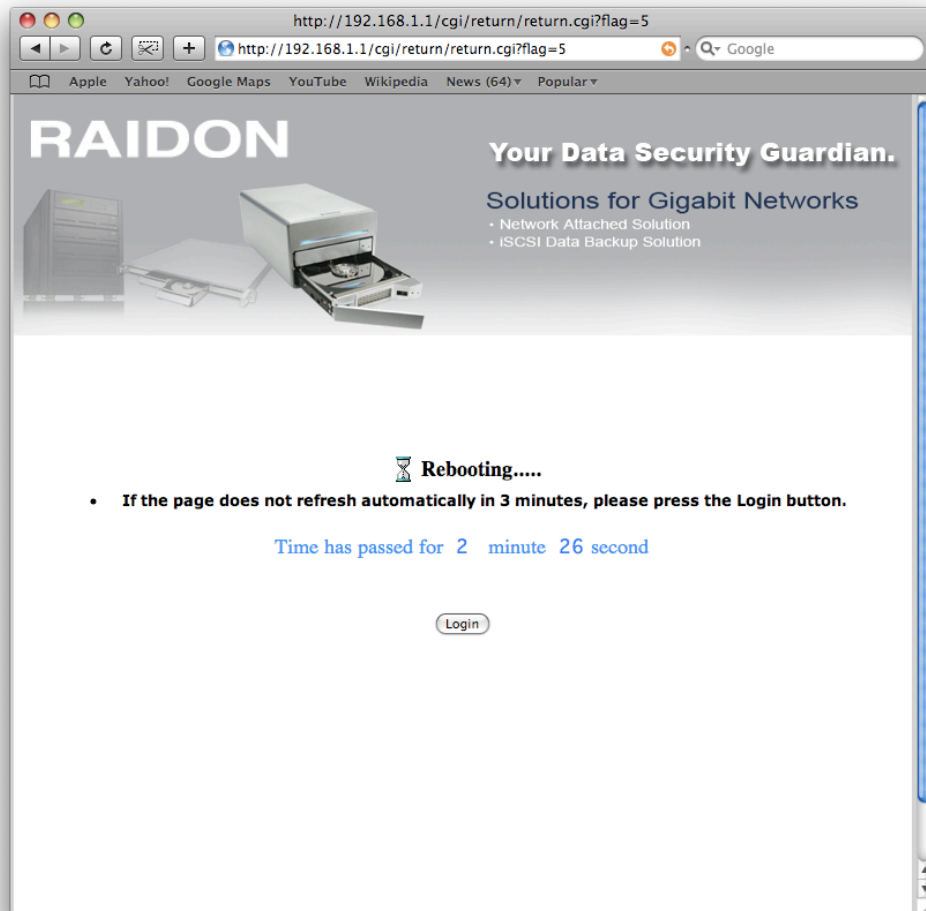
For more details on RAID setups please consult the Stardom Manual.



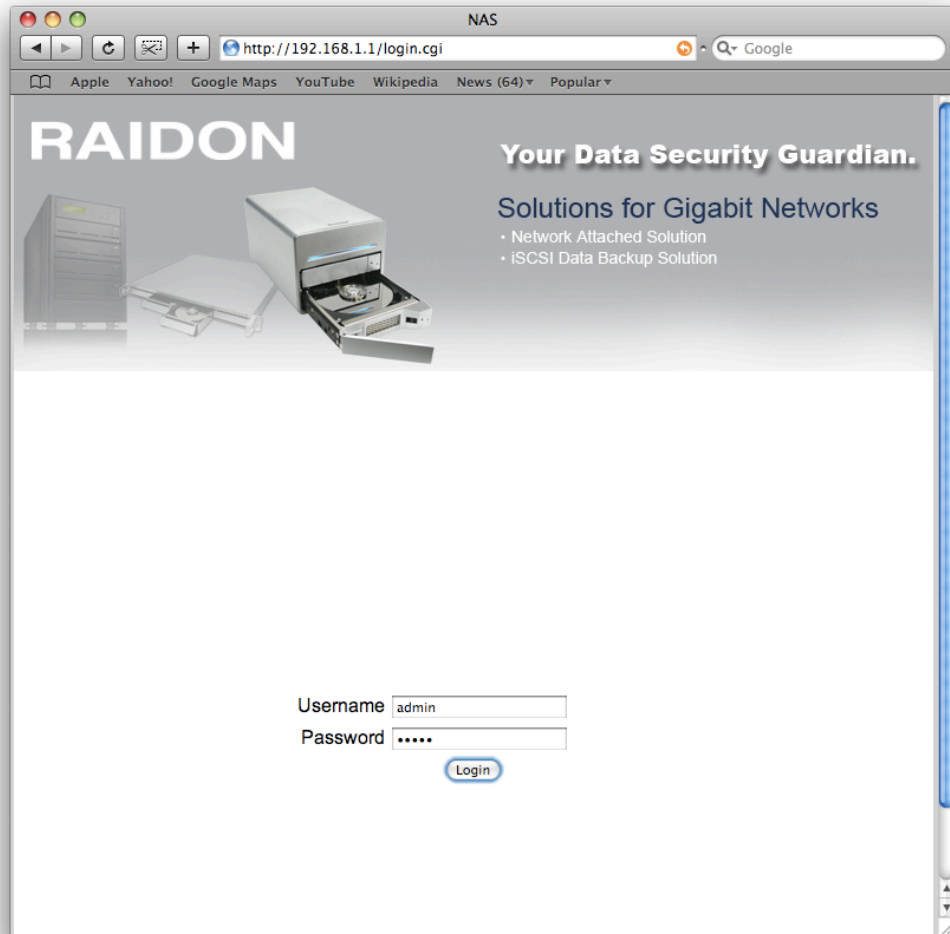
13) Hit "OK" on the pop-up.



14) You will now see the progress of the RAID, this can take up to 5 minutes depending on the Drive size and RAID configuration. If it hangs at 99% after 5 minutes you did not select the file system please refresh the page and re-login and look at the RAID page and retry.



15) The device will now be rebooting. Wait 3 minutes if the page does not refresh automatically please press the **"Login"** button.

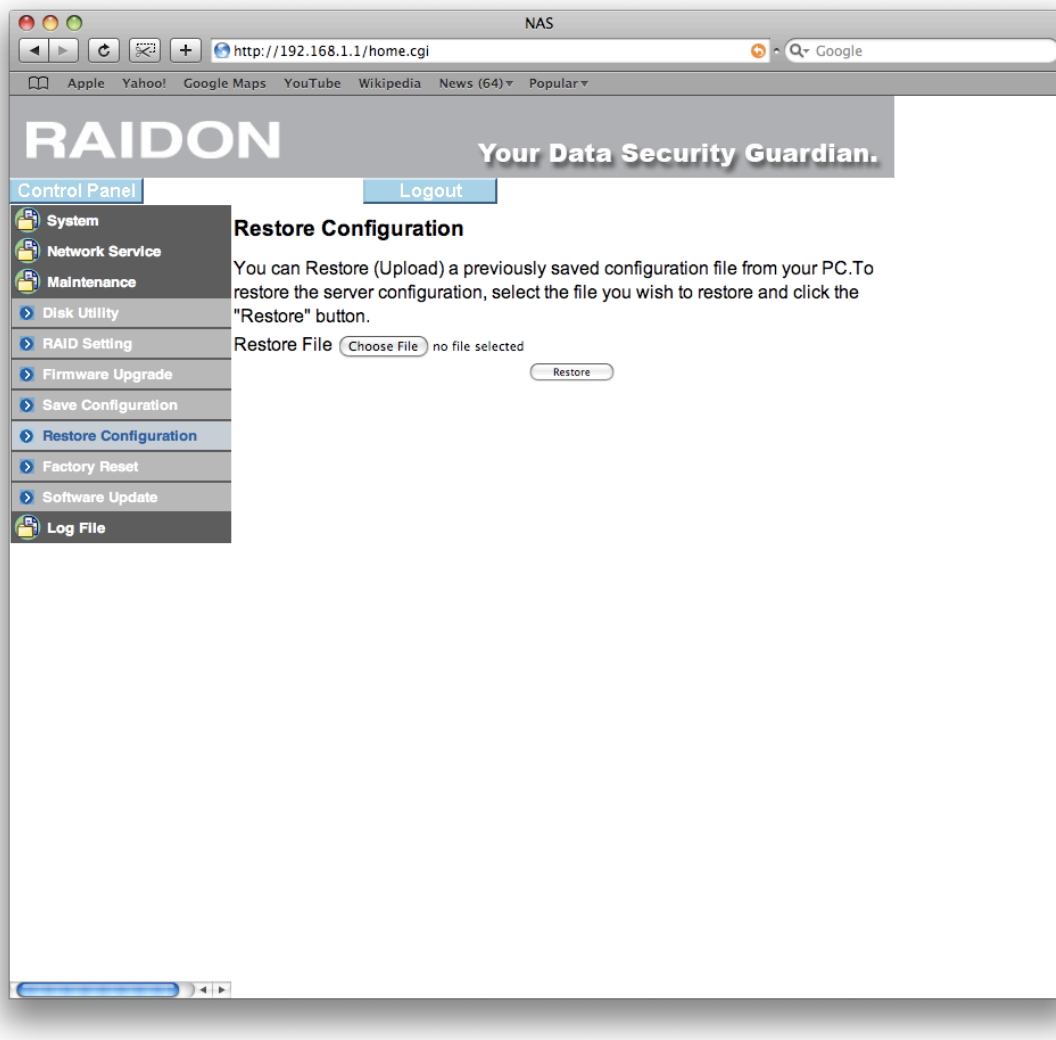


16) You will be presented with the login screen again.

Enter the following:

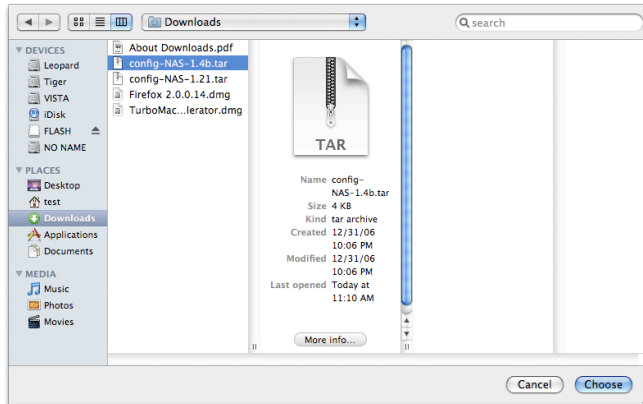
- a. Username: **admin**
- b. Password: **admin**
- c. Hit **"Login"**

Uploading the Configuration

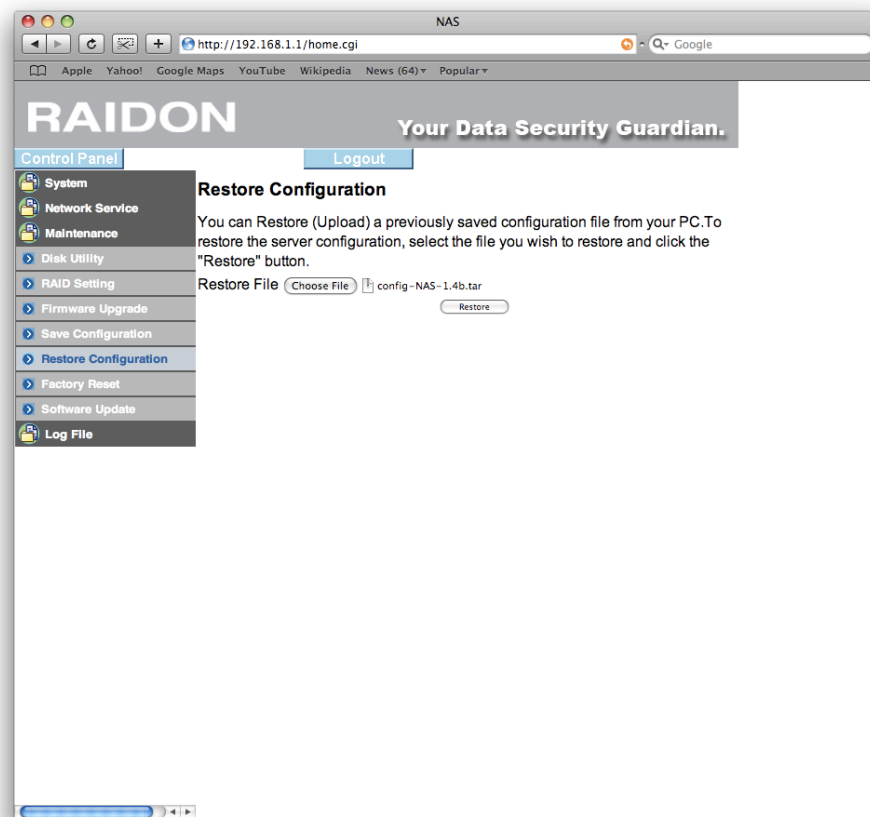


17) Click on **"Maintenance"** to expand it and then click on **"Restore Configuration"**. This step uploads all of the correct share settings on the drive.

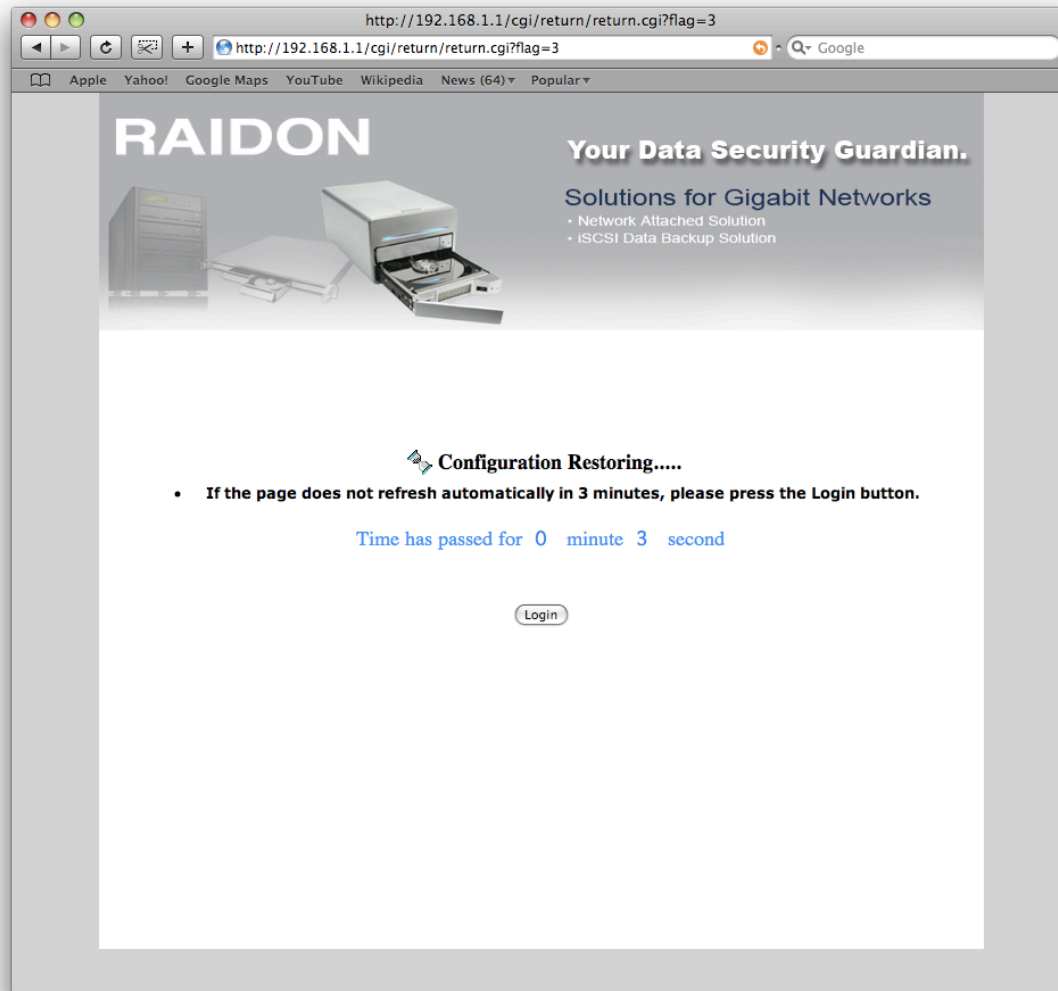
18) Click on the **"Choose File"** button.



20) Select the file **"config-NAS-1.4b.tar"** and hit **"Choose"**.



21) Hit **"Restore"**.

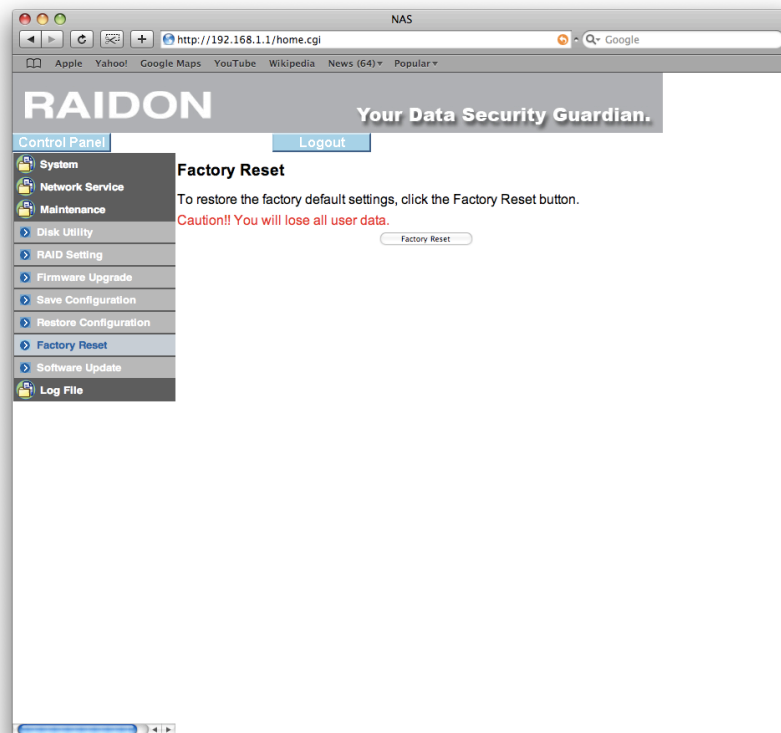


22) Once the restore is done or after 3 minutes has passed, Quit Safari, re-open it and enter **owc-nas.local** in to the address bar and hit **"return"**. You should be returned to the login screen. **If you are at the login screen, then the setup is complete and you are done assembling and configuring the unit.**

If you still don't get the the login screen, turn the enclosure off via the switch, wait 15 seconds and turn it back on. Wait until the blue light is solid, then try entering the **owc-nas.local** in the address bar again. If this still does not work, try restarting both the enclosure and computer and wait till the blue LED comes on solid.

Restoring to Factory Settings

If you find you are unable to access the drive or configurations page you may need to restore to factory settings. Make sure first that you have tried turning off and turning back on the enclosure and have waiting until the long blue light has gone from blinking to solid before



continuing.

23) If you can access the configuration page, but I am having problems mounting drives or having them show up:

Login to the configuration page by typing **owc-nas.local** in your Safari address bar and hit **"Return"**. Next click on **"Control Panel"** then **"Maintenance"** to expand it. Then click on "Factory Reset" and click the **"Factory Reset button"***

***You will loose all data**

24) It will continue to the restore page, once the restore is complete you will need directly connect the network cable to your computer.

If you cannot access the configuration web page you can do a reset by holding in the recessed reset button on the back of the unit until the long blue LED light goes out, then release the button.

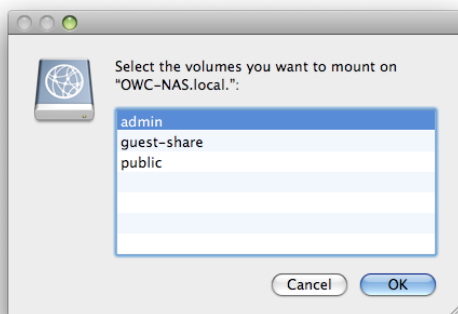
Next follow the RAID setup instructions (step 11) and the Uploading Configuration Instructions to complete the setup.

Mounting the Network Drive.

25) Once connected to your network you can mount the network drive by browsing your network connections in the finder for "OWC-NAS" or you can use the included OWC applications "**Automount_OWC-NAS-admin**" or "**Automount_OWC-NAS-choose**"



"**Automount_OWC-NAS-admin**" used to mount the admin folder, by default* the password and username is admin.*



"**Automount_OWC-NAS-choose**" pops-up with a choice of what you would like to mount (public, guest-share, admin, or any users you have created*).

***For creating users and changing account passwords please See the Stardom Manual.**

Either of these can be added to your startup items to automatically mount the network volume on startup.

To do this go to **"System Preferences" → "Accounts" →** Click on the user you want to add this as a startup item for. Next click on Login items and drag the application into the item list.

To Use iTunes Sharing you will need to put your music in the music folder located under public. Make sure iTunes is set in preferences to look for shared libraries.